



## STAFF REPORT

---

**DATE:** January 13, 2020

**TO:** Sacramento Regional Transit Board of Directors

**FROM:** Traci Canfield, Acting Manager, Transit Oriented Development and Real Estate

**SUBJ:** CONDITIONAL APPROVAL FOR SACRAMENTO COUNTY TO ACQUIRE EASEMENTS FOR DOT-FOLSOM BLVD. COMPLETE STREETS PHASE I PROJECT

### RECOMMENDATION

Adopt the Attached Resolutions.

### RESULT OF RECOMMENDED ACTION

Entering into agreements with the County of Sacramento (County), for the County to acquire easements, in perpetuity, from Sacramento Regional Transit (SacRT) as well as the Sacramento-Placerville Transportation Corridor Joint Powers Authority (JPA) property along the south side of Folsom Blvd. between Mayhew Road and Bradshaw Road as depicted in the attached maps.

### FISCAL IMPACT

SacRT will receive \$45,500 in exchange for the granting of these easements on SacRT's property. The dollar value of the easement is based on a recent independent third party appraisal. The County will pay for all the costs for the transaction.

### DISCUSSION

The County project will allow for streetscape improvements such as sidewalks, curb, ramps, landscaping, retaining wall with fencing, bus stop pull outs, updating traffic signal systems for bicycle detection and pedestrian crossings that meet Americans with Disabilities Act (ADA) and will improve safety for bicyclists and pedestrians. The result will be better walkability along with improved safety and beautification of the area. In addition, these improvements will allow for better access to the Butterfield Light Rail station. As this is a necessary improvement for ADA purposes, the County has the ability to acquire these easements through eminent domain, if SacRT chose not to sell.

The granting these easements to the County will allow for above mentioned improvements to be made on APNs 068-0011-093, 068-0011-095 and 068-0011-096 adjacent to the Butterfield station platform. In addition, where SacRT has an easement on JPA properties (APNs 068-0011-092 and 068-0011-094), SacRT has the right to approve the easement purchase as any changes to SacRT's easement could affect SacRT operations. As this project will improve access to transit, it is Staff's

recommendation to authorize the General Manager/CEO to grant the easements on SacRT property and approve of the JPA's granting of easements on JPA's property contingent upon Federal Transportation Administration (FTA) and JPA concurrence.

# LOCATION MAP

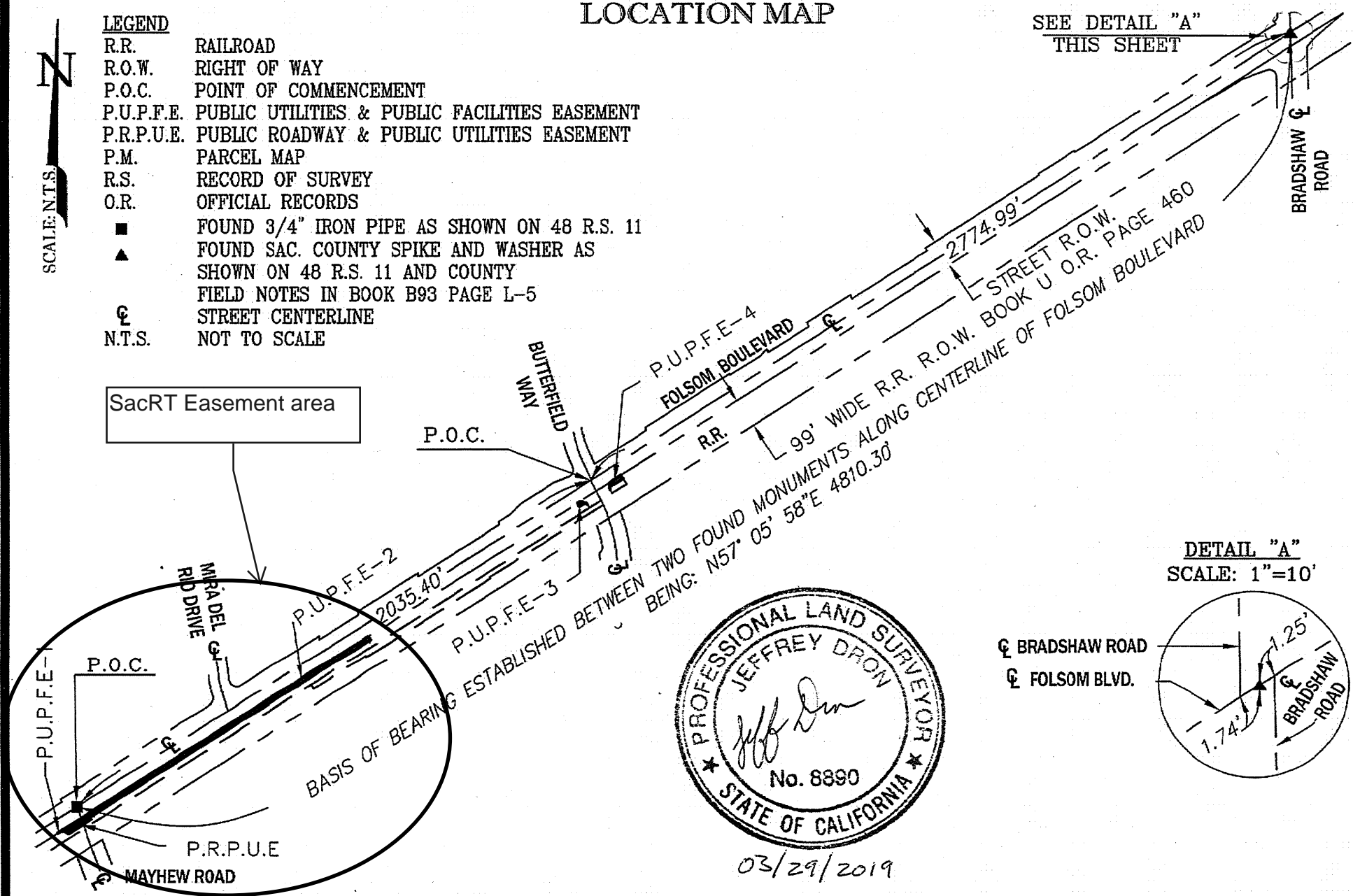
SEE DETAIL "A"  
THIS SHEET

SCALE: N.T.S.

### LEGEND

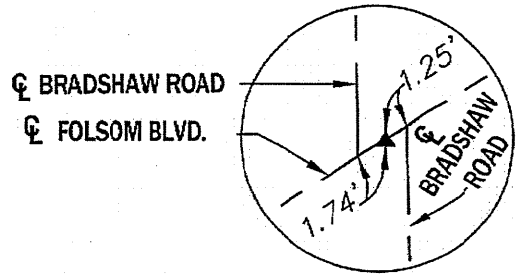
- R.R. RAILROAD
- R.O.W. RIGHT OF WAY
- P.O.C. POINT OF COMMENCEMENT
- P.U.P.F.E. PUBLIC UTILITIES & PUBLIC FACILITIES EASEMENT
- P.R.P.U.E. PUBLIC ROADWAY & PUBLIC UTILITIES EASEMENT
- P.M. PARCEL MAP
- R.S. RECORD OF SURVEY
- O.R. OFFICIAL RECORDS
- FOUND 3/4" IRON PIPE AS SHOWN ON 48 R.S. 11
- ▲ FOUND SAC. COUNTY SPIKE AND WASHER AS SHOWN ON 48 R.S. 11 AND COUNTY FIELD NOTES IN BOOK B93 PAGE L-5
- ⊕ STREET CENTERLINE
- N.T.S. NOT TO SCALE

SacRT Easement area



03/29/2019

DETAIL "A"  
SCALE: 1"=10'



**COUNTY OF SACRAMENTO**  
 OFFICE OF DEVELOPMENT & CODE SERVICES  
 SURVEY SECTION  
 SCALE: 1"=N.T.S. MARCH 2019

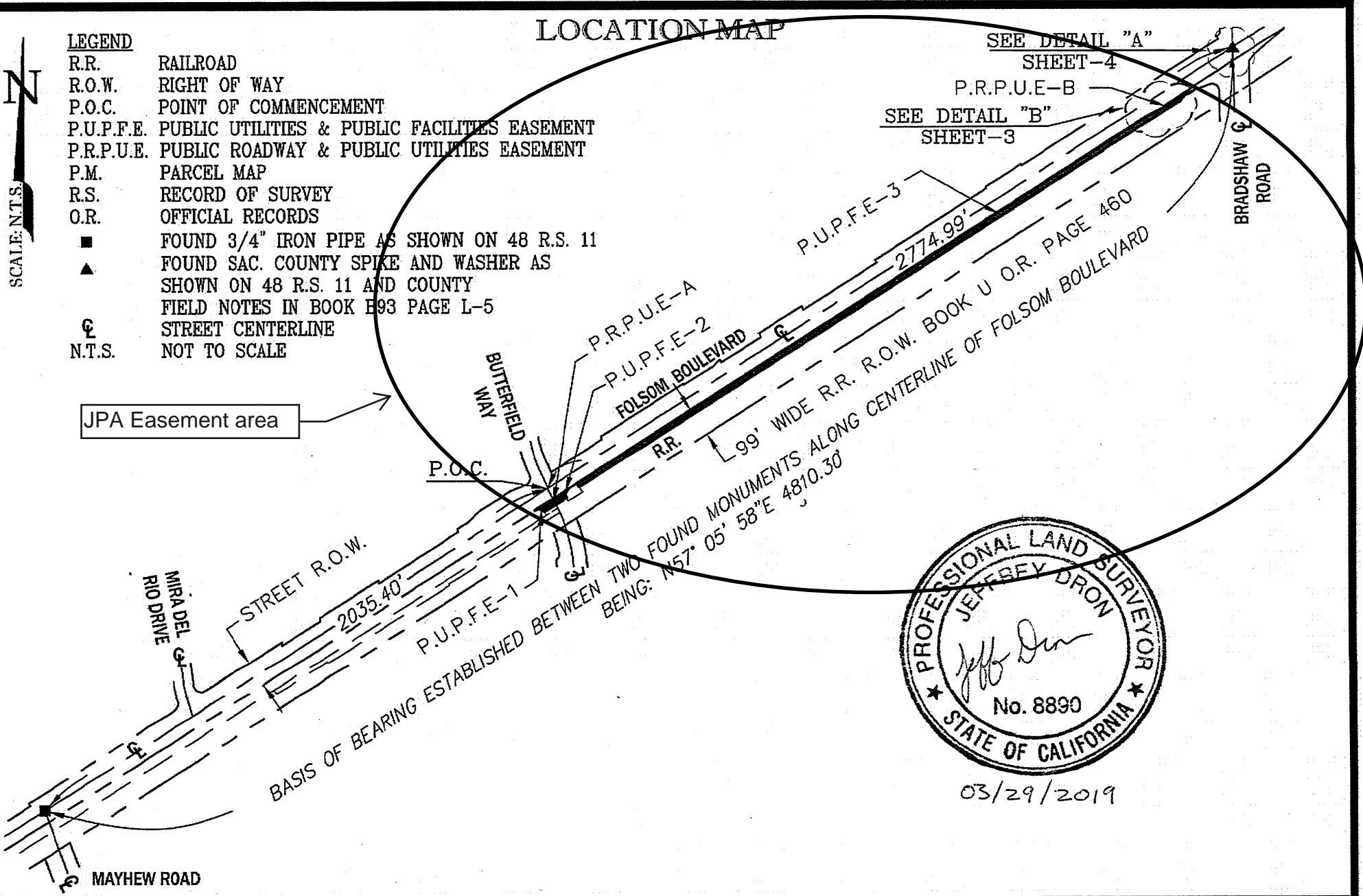
**EXHIBIT "B"**  
 PORTIONS OF PARCEL 2 AND PARCEL 3 OF  
 BOOK 851220 O.R. PAGE 1777  
 COUNTY OF SACRAMENTO  
 STATE OF CALIFORNIA

# LOCATION MAP

## LEGEND

- R.R. RAILROAD
- R.O.W. RIGHT OF WAY
- P.O.C. POINT OF COMMENCEMENT
- P.U.P.F.E. PUBLIC UTILITIES & PUBLIC FACILITIES EASEMENT
- P.R.P.U.E. PUBLIC ROADWAY & PUBLIC UTILITIES EASEMENT
- P.M. PARCEL MAP
- R.S. RECORD OF SURVEY
- O.R. OFFICIAL RECORDS
- FOUND 3/4" IRON PIPE AS SHOWN ON 48 R.S. 11
- ▲ FOUND SAC. COUNTY SPIKE AND WASHER AS SHOWN ON 48 R.S. 11 AND COUNTY FIELD NOTES IN BOOK E93 PAGE L-5
- ⊕ STREET CENTERLINE
- N.T.S. NOT TO SCALE

SCALE: N.T.S.



SEE DETAIL "A" SHEET-4

SEE DETAIL "B" SHEET-3



03/29/2019

COUNTY OF SACRAMENTO  
OFFICE OF DEVELOPMENT & CODE SERVICES  
SURVEY SECTION

SCALE: 1"=N.T.S. MARCH 2019

EXHIBIT "B"  
PORTIONS OF  
DOC# 199609061664  
COUNTY OF SACRAMENTO  
STATE OF CALIFORNIA

RESOLUTION NO. 20-01-0001

Adopted by the Board of Directors of the Sacramento Regional Transit District on this date:

January 13, 2020

**CONDITIONALLY APPROVING AN EASEMENT AGREEMENT WITH  
SACRAMENTO COUNTY FOR THE DOT-FOLSOM BLVD COMPLETE STREETS  
PHASE 1 PROJECT**

NOW, THEREFORE, BE IT HEREBY RESOLVED BY THE BOARD OF DIRECTORS OF THE SACRAMENTO REGIONAL TRANSIT DISTRICT AS FOLLOWS:

THAT, the Board hereby authorizes the General Manager to grant an easement in gross for the purpose of constructing and maintaining ADA compliant streetscape improvements, to the County of Sacramento upon and within parcels identified as Assessor Parcel Numbers 068-0011-093, 068-0011-095, and 068-0011-096 upon which the County will complete the DOT-Folsom Blvd Complete Streets Phase 1 Project for the purchase price of \$45,500.00, conditioned on Federal Transit Administration (FTA) concurrence in the proposed use of the property.

THAT, upon satisfaction of the foregoing condition, the General Manager/CEO is hereby authorized and directed to execute said Easement Agreement, and all documents necessary to grant the Easement to the Grantee.

\_\_\_\_\_  
PATRICK KENNEDY, Chair

A T T E S T:

HENRY LI, Secretary

By: \_\_\_\_\_  
Cindy Brooks, Assistant Secretary

RESOLUTION NO. 20-01-0002

Adopted by the Board of Directors of the Sacramento Regional Transit District on this date:

January 13, 2020

**CONDITIONALLY GRANTING CONCURRENCE TO AN EASEMENT AGREEMENT  
BETWEEN THE SACRAMENTO-PLACERVILLE TRANSPORTATION CORRIDOR  
JOINT POWERS AUTHORITY AND SACRAMENTO COUNTY FOR THE DOT-  
FOLSOM BLVD COMPLETE STREETS PHASE 1 PROJECT**

NOW, THEREFORE, BE IT HEREBY RESOLVED BY THE BOARD OF DIRECTORS OF THE SACRAMENTO REGIONAL TRANSIT DISTRICT AS FOLLOWS:

THAT, the Board hereby concurs to the grant an easement in gross by the Sacramento-Placerville Transportation Corridor Joint Powers Authority, for the purpose of constructing and maintaining ADA compliant streetscape improvements, to the County of Sacramento upon and within parcels identified as Assessor Parcel Numbers 068-0011-092 and 068-0011-094, upon which the County will complete the DOT-Folsom Blvd Complete Streets Phase 1 Project for the purchase price of \$118,400.00, conditioned on Federal Transit Administration (FTA) concurrence in the proposed use of the property.

THAT, upon satisfaction of the foregoing condition, the General Manager/CEO is hereby authorized and directed to execute said Easement Agreement, and all documents necessary to demonstrate SacRT's concurrence with the Sacramento-Placerville Transportation Corridor Joint Powers Authority's granting of said Easement to the Grantee.

---

PATRICK KENNEDY, Chair

A T T E S T:

HENRY LI, Secretary

By: \_\_\_\_\_  
Cindy Brooks, Assistant Secretary